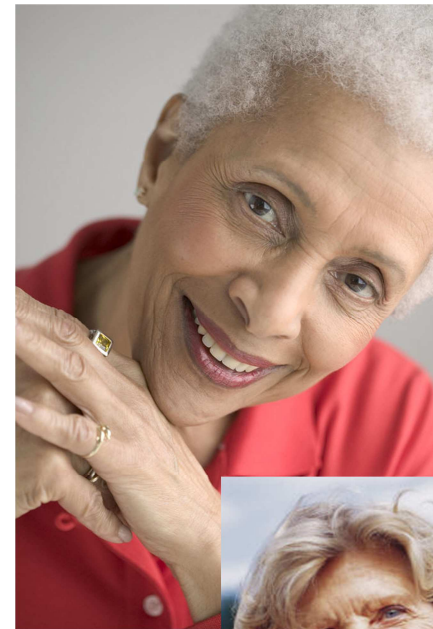


*Sometimes staying independent and in one's own home means getting some help.*

*MSSP provides the frail senior with the ability to stay in his or her own home for as long as safely possible by providing community support services and resources.*



Catholic Charities  
Diocese of Stockton

*Help for Today... Hope for Tomorrow*

---

***Multipurpose Senior Services Program***

Catholic Charities – Stockton

1106 N. El Dorado St.

Stockton, California 95202

Phone (209) 444-5931

Fax (209) 444-5929

---

**Multipurpose  
Senior Services  
Program (MSSP)**

## *What is MSSP?*

MSSP is a voluntary program – and paid for by MediCal Waived Services Funds – that helps prevent unnecessary placement of elderly individuals in nursing homes.

MSSP focuses on encouraging frail, elderly residents of San Joaquin County to make healthy lifestyle choices for their social, health, and housing needs.

## *Who is eligible for MSSP?*

Any resident of San Joaquin County, 65 years or older who...

- is eligible for or receives Medi-Cal benefits
- is in frail health
- is at risk of placement in a skilled nursing facility
- has multiple health problems requiring multiple community services
- will voluntarily accept MSSP services

***MSSP:*** *Helping the elderly live at home longer and safer.*

## *How does MSSP work?*

A social work care manager and An experienced nurse work with the client – and family members – to create the most appropriate care possible.

The enrollment process starts with a comprehensive lifestyle evaluation. After assessing the senior's needs, the team works closely with the individual to determine what the person wants for him or herself.

The MSSP team works with the individual's family and medical team to be able to coordinate a broad range of in-home services. The team provides information and counseling to the individual and the family and helps to coordinate services that are beneficial and to which the person is entitled.

***MSSP does not replace any benefits a senior is currently receiving.***

A Care Plan is created that can include ongoing family and friend support along with a combination of existing support services. If more resources are needed, the team helps obtain and coordinate supplemental services for the client. MSSP supports the family and primary caregivers of the frail senior by providing consultation and respite from daily care responsibilities.

The team works to address the immediate and possible future needs of the senior.

## *What services does MSSP provide?*

Care management includes:

- comprehensive health and psychosocial assessment
- care planning with the client and family
- arrangement of services
- coordination of care with other community agencies
- advocacy
- some limited payment of in home services
- ongoing monitoring
- annual reassessments
- quarterly home visits and monthly contacts